



Capsule collection

SKINS Wine Cabin

An enveloping and luxurious cabinet, with customizable finishes, made to measure for undercounter wine cellar. Produced in Italy with m2atelier design.

SUPPLEMENT FOR UNDERCOUNTER WINE CELLAR

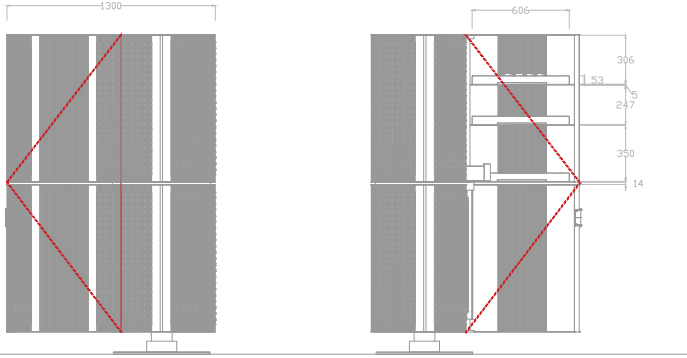
S K I N S Wine Cabin

A pared-down aesthetic encounters urban suggestions and vintage references in the refined and accessorized S K I N S Wine Cabin, a strong character luxury, free-standing storage unit for the undercounter wine cellar.

Also designed for the centre of the room, the wine cabin becomes a very decorative furnishing element distinguished by an interesting combination of materials with colour and material effects. The rotating base supports a customisable structure with different finishes that encloses micro-etched glass.

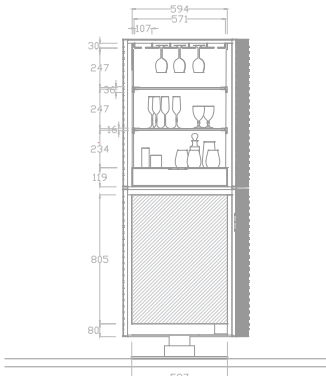
Like a precious jewellery treasury, S K I N S safeguards the finest wines, stored in the ideal conditions of Signature Kitchen Suite's undercounter wine cellar, complete with a "vanity" area in which to store glasses, wine and champagne bottle stoppers, corkscrews and bottle openers, carafes and decanters.

S K I N S Wine Cabin may be customised with the catalogue finishes or personalised depending on availability and technical verification. Made in Italy, it is a product designed by m2atelier studio.



BACK VIEW

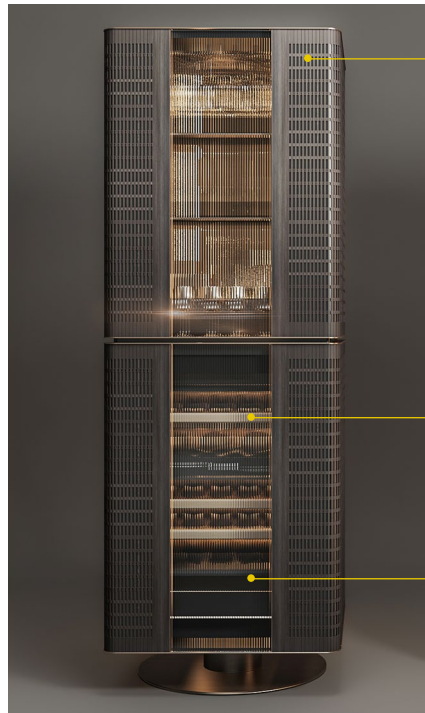
SIDE VIEW



FRONT VIEW

FINISHING DETAILS WOOD VARIANT -

NOK/SEK 442 500,- DKK 289 000,-



Carved oak

Colours:



Black



Grey

Profiles and bases in metal:



Burnished brass



Brushed metallic black

Micro-etched glass:



Smoky grey

LEATHER VARIANT -

NOK/SEK 390 000,- DKK 254 000,-



Venetian-pattern nubuck or leather

Nabuk colours:



Black



Dove grey



Rust



Pink

Leather colours:



Sand

Profiles and bases:



Burnished brass



Brushed metallic black

Micro-etched glass:



Smoky grey

*NOTE The prices does not include VAT, delivery or installation of the product.
Price may vary based on raw material purchase price or customisation requested.

FINISHING DETAILS LAMINATE VARIANT -

NOK/SEK 337 500,- DKK 220 200,-



Matte laminate with golf pattern

Colours:



Black



Graphite grey



Light grey



Red



Pink

Profiles and bases:



Burnished brass



Brushed metallic black

Micro-etched glass:



Smoky grey

INTERIORS



Background and drawer interior:



Black nubuck

Profiles and side shelf base:



Burnished brass



Brushed metallic black

Central shelves and side shelf fronts:



Smoky grey glass

Drawer front:



Grey oak

Door interior, drawer top and sides:



Matte black lacquer

Handles:



Burnished brass, sand leather

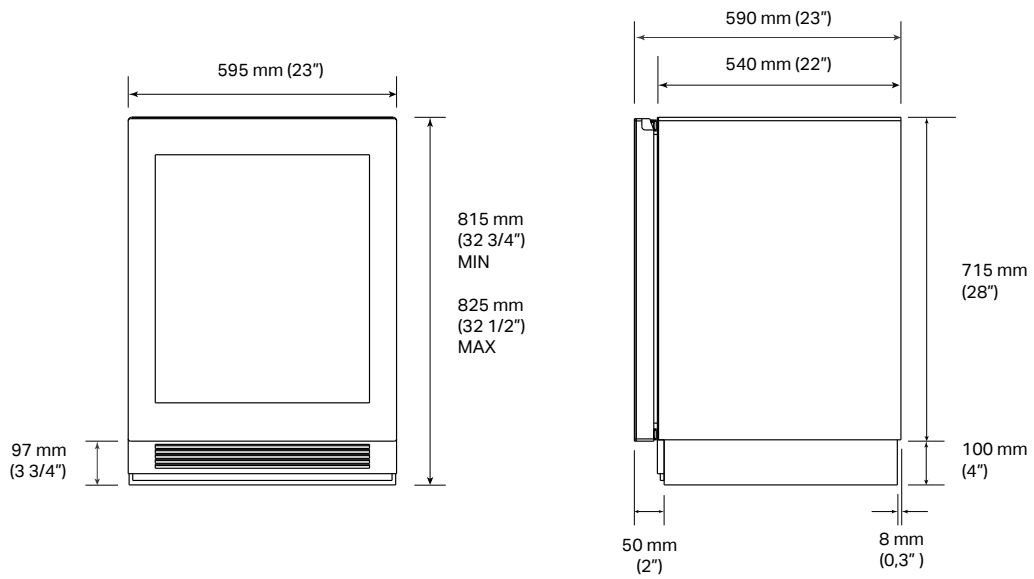


Metallic black, black nubuck

*NOTE The prices does not include VAT, delivery or installation of the product.
Price may vary based on raw material purchase price or customisation requested.

SKSUW2401G

Undercounter wine cellar



FRONT VIEW

SIDE VIEW

SKSUW2401G

Model	EAN: 8806091740960
Door type (non-reversible)	Glass
Hinges	Plat
Internal finish	Stainless steel
Energy Label	
Energy efficiency class	D
Bottle Capacity (750 ml)	41
Maximum sound level	< 37 dbA Max
General properties	
No-Frost	•
Inverter compressor	•
Wi-Fi enabled for SmartThinQ® control with iOS/Android app	•
Wine Cave Technology™	•
Temperature zones	2
Operating temperatures	from 5°C to 18°C
Functions that can be enabled from the control panel	Demo, Power On / Off, Light On / Off, Lock, Temp Control, Smart Diagnosis™, Wi-Fi
Humidity Control	•
High Altitude Compatibility	•
Anti-vibration motor	•
UV Protection	•
Storage shelves	4
Shelf material	Natural beech wood with stainless steel profiles
Presenter Shelves	•
True-View® Lighting	•
Presenter Shelf Lighting	•
Installation	
Four Point Front Adjustable with 4 Wheels	•
Attachment method to cabinetry	Top with no visible screws
Front Serviceable	•
Anti-tip Bracket Included	•
Reversible Door	NO
Technical Specifications	
Overall width	595 mm (23 1/2")
Overall height	815 mm (32") MIN ~ 825 mm (32 1/2") MAX
Overall depth	590 mm (23")
Net weight	67 kg
Shipping weight	71 kg
Max packaged product dimensions	970x650x650 mm (38"x25"x25")

Distributør i Scandinavia:
Siljander / Svingen Invest AS
Salhusvingen 27
5107 Salhus
Tlf +47 55 53 44 00
www.siljander.no
post@siljander.no